

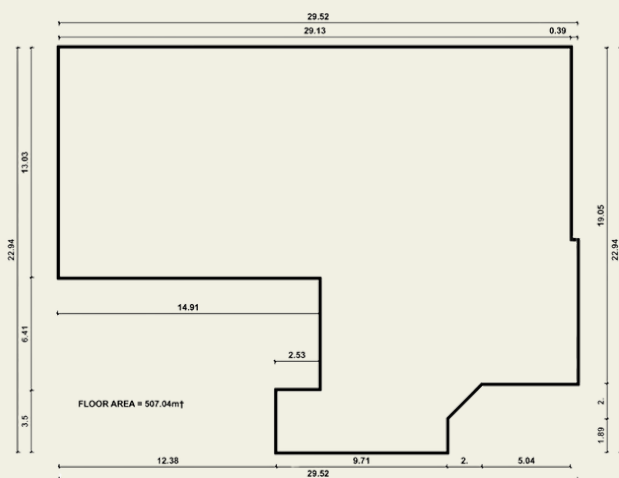
Fairway Lounge



Upper Level, Main Grandstand

Located on the upper level of the grandstand, this lounge has views over both the racecourse and the golf course.

This is a large flexible space that would suit a variety of events and offers bar facilities, natural light and private bathrooms.



Room Specifications

Set-up style

- Cocktail - 250
- Theatre - 150
- Caberet - 200
- Banquet - 220
- Classroom - 120
- Hollow Square - 50
- U-Shape - 40

Floor Area: 507 sqm